



Proposed Phase 1 Activity Plan for Fletton Field

Introduction

North Northants Council (NNC) are currently moving forward with the Asset of Community Value transfer process for Fletton Field and have confirmed Oundle Town Council (OTC) as the sole bidder. A notice of disposal has been posted that any objections should be made by 10th of February 2023. Glenrowan homes have begun clearance of the neighbouring land (Old Abbott House) and the access point to Fletton Field from Glapthorn Road. There is no registered right of way across their land, however Glenrowan have offered a 2m pathway through from Glapthorn road and have marked the access with fencing along the south boundary of their land alongside the property at 3 Glapthorn Road.

The purpose of this document is to summarise the proposed developments that would be carried out by the Fletton Field Association (FFA) during 2023. These are in line with the [Business Plan](#) phases listed on page 9 of the plan presented and agreed in principle with Oundle Town Council in March 2022. This has also been shared widely with the general public online with the accompanying [short video](#) and has helped us gain support from our NNC councillors.

We would request approval for the developments from Oundle Town Council (OTC) in February/March after which we would then take the plans for public consultation at the town meeting on 27th of April 2023. We would then seek permission to start work a time agreed by OTC and North Northants Council. In the meantime, we will continue with ongoing monthly maintenance work as we have during 2022, liability covered by our RHS Insurance and risk assessments.

The focus for **phase 1** will be on quick wins. Timing will be dependent on hand over of the field, agreement of specifications and availability of resources. The proposed positioning of trees, benches, wildflowers etc are shown on the layout plans.

Facilities

We would like to install the following items:

1. **Dog Poo bins** – we would request that NNC would be able to include 2 dog poo bins on their emptying schedule. We will write to Helen Harrison and ask if she could make this request on our behalf, we would ask if NNC can fund this facility.
2. **Storage Facility** – ideally, we would have a store for the assets that we are accumulating (e.g., two rough cut mowers, lighting, temporary fencing etc). We will write to NNC and ask if they could make allowance for temporary storage units (e.g. a tastefully converted shipping container) to be positioned on concrete flags on the field. We would also consider the sight lines for our neighbours in the potential positioning. We only seek approval in principle for this in 2023 as we will need to create a suitable design and raise funding.
3. **Cycle Racks** – Two cycle racks, the bar type similar to those installed in the town centre and Barnwell park will be installed. (So, Oak beam and metal bar construction). The cost for this would be covered by a donor.
4. **Picnic Benches** – A robust design of picnic bench will be chosen from potential suppliers with a focus on a potential local source. Sponsorship will be sought for these from local business so an engraved plaque on the bench with the sponsors logo and Q/R code. We would hope maybe up to 4 benches. They would not be fixed so that they can be moved for mowing.
5. **Park Benches** – Maybe up to 4 robust commercial designed benches to be positioned around the field. Similarly, sponsorship or memorial attribution will be sought for these. They would not be fixed in position.
6. **Access Point off Glapthorn Road** – Oundle Town Council need to consider the offered entrance from Glenrowan Homes. The FFA committee believe that this is a generous offer but would like to see the public right of way included in the Land Registry.

Litter bins will not be installed, visitors will be asked to take home what they bring with them.



Wildlife and meadows

The field already represents a place where there are places with secluded undergrowth providing habitat for wildlife, these will be left intact with the exception of where other shrub or tree planting takes place.

1. **Wild Flower Meadows** – the field already has some naturally planted wildflowers these will be developed by additional seeding in some areas. A bulb planting event will be held in autumn, FFA will fund this.
2. **Bug Hotels, Hedge Hog homes & Bird Boxes** – Local schools will be asked if they wish to do a project on understanding what can encourage and help wildlife thrive and to make a proposal on what would work for Fletton Field and how it will be created. FFA may provide a seed fund for materials on an approved project. They would then be asked to run an installation event on the field.

Tree and Shrub Planting

There are already a trees and shrubs planted around the periphery of the field. These will be reviewed and encouraged by clearing undergrowth if needs be.

1. **Community Orchard** – The plan includes proposed planting of a variety of apple, pear, cherry and plum trees as a community orchard, 20 trees in total. A row of these have been positioned to act as screening for the quiet area at the south west corner of the field. FFA will fund these or ask for donation from local garden centres. A planting event would take place in autumn.
2. **Specimen Tree** – We had intended to plant a commemorative Jubilee tree in 2022, however this time has now past. OTC have proposed that they would rename the field so maybe a specimen Coronation tree? OTC to review and decide.
3. **Shrubs** – Maintenance of existing but no planned planting.

Hardcore Paths

The ambition is that we would have a number of hoggin paths (a mix of gravel, sand and clay that binds firmly when compacted – as Barnwell park have) to allow all weather access for wheel chair users. This is a significant investment and we will require design and funding for this so will not be considered in 2023. We will continue to mow in the existing path layout.

Living Sculptures

FFA have been offered sponsorship to create a willow sculpture. This is a generous offer; however, willow could potentially become a significant maintenance issue. So we will make further investigation into the maintenance requirements and experiences of other installations so that we can come back to OTC with a full picture of what is involved and ask the councillors to make a decision.

Woodcraft, Firepit, and log Seating

We will mow in a circular area as shown in the plan. We will ask, scout guide, cub and brownie groups if they wish to propose a plan. If they do, we will ask that they present it to OTC for consideration including a full costing, risk assessment and plan for implementation.

Yoga and Tai Chi Area

We will mow in a circular area at the south west corner of the field and inform the local groups that they are able to use the public open space as long as they inform OTC and have their own public liability insurance.

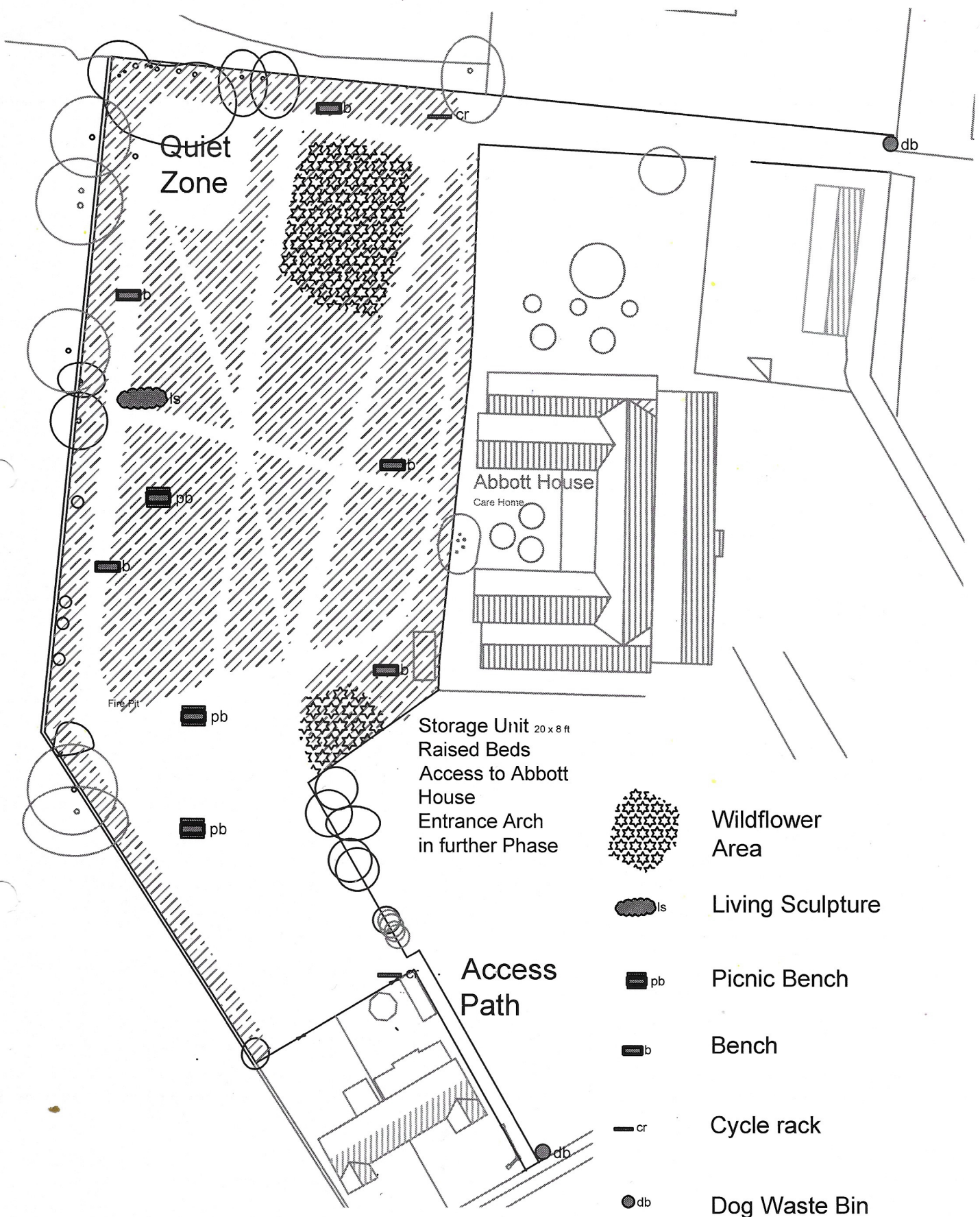
Events Calendar

Although FFA has organised events as part of our campaign we do not consider that this is a core function of the group. We would like to encourage community groups to use the field, but as the field will be an asset of OTC we would hope that managing an events calendar as with The Victoria Hall would become a council function.









Maintenance Schedule

We have on a monthly basis had a volunteer group who have been involved in regular mowing and pruning on the field. We would intend to continue with schedule and as potential to add some of the facilities mentioned in this document we may organise dedicated working parties to make an installation. If OTC choose to offer a monthly cut of the grass on the field from their in-house maintenance team this would help us focus on the foliage around the field and installation of assets. As items are installed, we will also ensure that we consider the potential impact and ongoing costs and show how these can be covered.



Storage Unit 20 x 8 ft
 Raised Beds
 Access to Abbott House
 Entrance Arch
 in further Phase

-  Wildflower Area
-  Living Sculpture
-  Picnic Bench
-  Bench
-  Cycle rack
-  Dog Waste Bin

Rev a 09 02 2023 Db moved nos Pb, B reduced



Fletton Field Oundle

Preliminary Proposals for Phase 1